

nelson international

# MURAL FESTIVAL



## Access Guide

august 8th- august 10th

presented by the Nelson District Arts Council :  
access information about NIMF events, venues,  
and mural locations.

Coyotes Waterslide by Emma Noyes  
Photo by Electrify Photography







# contents

---

Welcome	4
Site Map	6
Accessibility	8
Cycling Without Age	8
Mural Route	10
Patio Parties	12
Murals and Muralists	14
Block Party	18
ASL Schedule (Saturday)	19
Site Access ( Saturday)	20
Workshops	23
Site Access (KATI)	25

# Welcome to the Nelson International Mural Festival

The Nelson International Mural festival is a celebration of creativity, culture, and artistic collaboration. We welcome street artists, muralists, creators, and art-lovers from all over the world.

Our festival is a safe place for peoples of all cultures, genders, ages and abilities to: gather, participate, and celebrate public art.

This Access Guide is here to help you have an accessible and safe experience at our annual festival. The guide provides access information for our venues, the locations of the existing murals, and additional ways we are removing barriers to ensure that that NIMF is accessible to all.

Further information about the festival can be found on our website at: **[www.ndac.ca](http://www.ndac.ca)**.

Feel free to contact us with any questions or feedback about the Nelson International Mural Festival or this Access Guide.

**Email: [info@ndac.ca](mailto:info@ndac.ca)**





Photo by Electrify Photography

## **Alternative Formats:**

You can download a PDF and/or a large print version of this Access Guide from **[www.ndac.ca](http://www.ndac.ca)**. Physical alternative formats will be available upon request.

## **Who is this Access Guide for?**

Our goal with this Guide is to provide a range of access information for anyone who self-identifies as a person with a disability. This includes: D/deaf and neurodivergent people if they identify as disabled. It includes persons living with a mental illness and individuals with physical, psychosocial and/or learning disabilities that may be long-term, temporary or fluctuating. It is for the individuals with a disability that may or may not be apparent.

Individuals with barriers to access may not identify as disabled but we are guided by the social model of disability and recognize that people can experience disabling barriers whether they identify as disabled or not.

# Railtown site map



**WATER STATION**



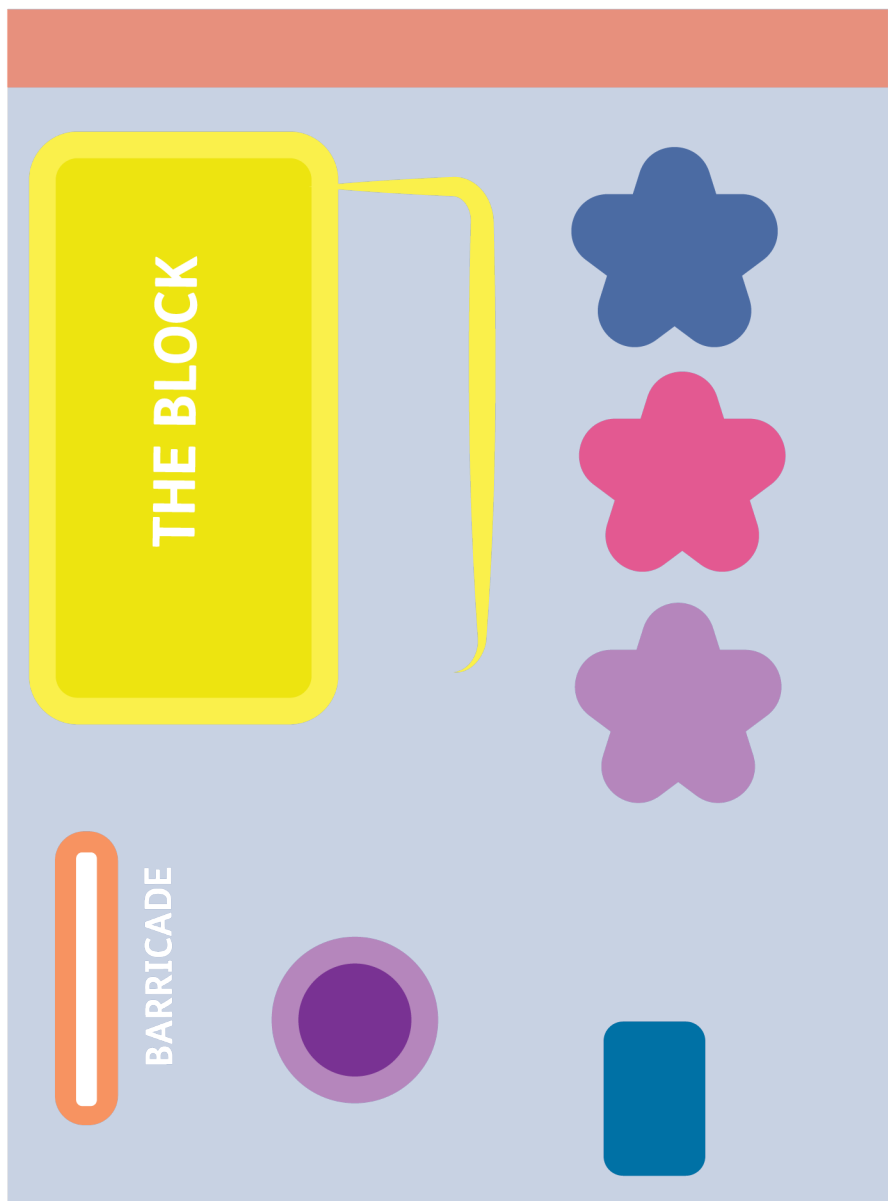
**FACE PAINTING TENT**



**KIDS TENT**



**FIRST AID TENT**





INFO BOOTH



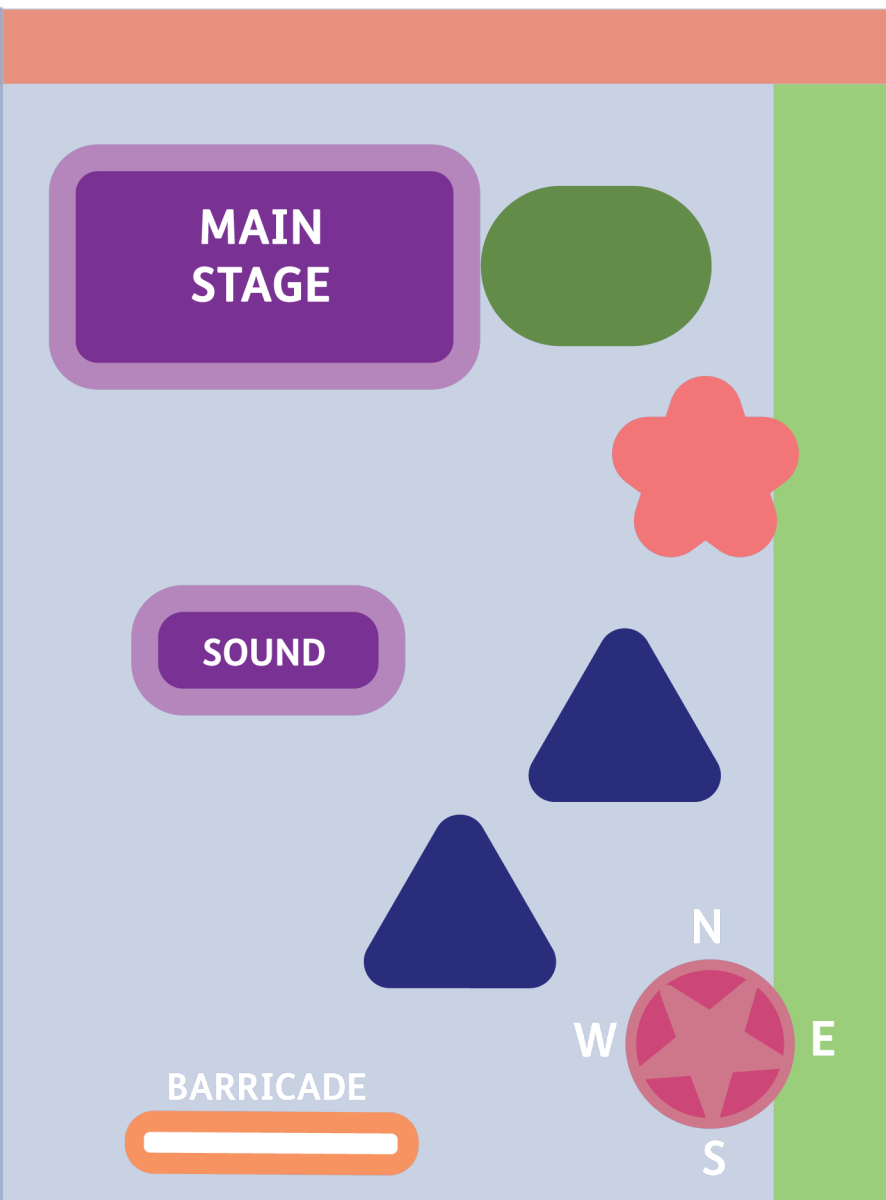
SEATING AREA



PERFORMER TENT



WASHROOM



# Accessibility

## Outdoor Art Spaces

The free, outdoor nature of our festival supports broad public access, but it can also present unique challenges. Some venues or mural sites may have physical barriers due to their geography. When this occurs, we're committed to transparency by providing clear descriptions of these barriers and offering alternative ways to engage—such as digital tours, accessible viewing points, or other inclusive formats—so that everyone can experience the festival in meaningful ways.





# Cycling Without Age

## Time

The Cycling Without Age Drivers will be operating on Friday August 8th and Saturday August 9th . Friday rides will be available between : **4:00 p.m and 9:00 p.m.**

On Saturday rides are available between the hours of **4:00 p.m- 8:00 p.m.** These hours are approximate.

## Location

The pickup spot for Cycling Without Age is at the **Kootenay Co-Op (777 Baker St )**. They will be operating two trishaws with a capacity of two people each.

## Reservation

Rides with Cycling Without Age can be booked over the phone directly with Cycling Without Age.

Cycling Without Age:  
(250) 505-1999

# Friday night mural route

Mural site performances run:

August 8th, 7:00 p.m - 9:00 p.m. Street parking is free after 5:00 p.m . It is limited and first-come-first serve in downtown Nelson.

## 1. *Moonshadow* by **NASARIMBA:**

Performance by **Baque Zero Graus**, located behind Shambhala's office ( 295 Baker St)

## 2. *Untitled Chaos* by **Andrew Tavukciyan:**

Performance by **Vivian Brass**, located behind the Tandoori Grill Restaurant (409 Kootenay St)

## 3. *Striking While the Iron Is Hot* by the **Color Dreamers:**

Performance by **Onami Lee-Hem** , located behind Hippersons Hardware Store (395 Baker St)

## 4. *the story of gunpowder gertie* by **Gijs VanHee:**

Performance by **Molly Jo McQuaid with Alex Leffelaar** located on the side of the Nelson Parkade. (416 Vernon St)

## 5. *NKw?ast-Deep Water & John Frederick Hume* by **Sheldon Pierre Louis and Kevin Ledo:**

Our information booth is here and a performance by **Hoops and Bubbles** located behind the Hume Patio (422 Vernon St)

## 6. *Lions Gate* by **Tanya Pixie Johnson:**

Performance by **Shivivi**, located behind the Nelson Musuem (502 Vernon St)

## 7. *~ transición* by **Angie Jerez:**

Performance by **Candela Latina ( Latin Fire )** located at Nature's Health Products Store (461 Josephine St)



### 8. *Passageway* by Timothy Robert Smith:

Performance by **wild machine**, located in the Adventure Hotel's parking lot (616 Vernon St)

### 9. *Leaning Wilds* by Priscilla Yu:

Performance by **Taalspsin (DJ Party)**, located in front of the Kootenay Co-Op (777 Baker St)

### 10. *Trillium Symphony* by Anaïs Lera:

Performance by **Ruth and Shelby**, located on the corner of the Nelson Medical Associates Clinic (405 Hendryx St)

# Friday night patio parties

On Friday evening of the Nelson International Mural Festival, enjoy not only mural site performances but also lively patio activations featuring live music and DJ sets throughout downtown Nelson.

## mochilero

**Time :** 7:00p.m - 10:00 p.m

**Location:** Red Light Ramen (308 Herridge Lane)

**Site Access:** The patio at Red Light ramen has level access in Herridge Lane.

**Parking:** The nearest accessible parking spaces are on Kootenay Street near Abacus Bead store. There are level access areas in Herridge Lane near to the patio where drop-off is possible.

## FLUXO

**Time:** 6:00 p.m - 10:00 p.m

**Location:** Hume Beer Garden (420 Vernon St)

**Site Access:** The patio at the Hume Beer Garden has level access from Vernon St.

**Parking:** The nearest and accessible parking spaces are right next to the patio in the Nelson Parkade which has fee's associated. Or there is free parking after 5:00 p.m in front of the Nelson Musuem down the street.

## Nato

**Time:** 9:00 p.m - 12:00 p.m

**Location:** Beauties (449 Baker St)

**Site Access:** Beauties is located on the main street in downtown Nelson. It has a sidewalk with level access to the patio.

**Parking:** There is a handicap parking spot to the left of Beauties for anyone who has a parking pass for that space. There is street parking slots along the whole street, a convenient drop off spot would be the Nelson Orthodontist parking lot behind the Royal Bank building.

## Salix

**Time:** 7:00 p.m - 11:00 p.m

**Location:** Cantina Del Centro (565 Baker St)

**Site Access:** Cantina is located on the main street in downtown Nelson. There outdoor patio has two steps to access it but the restaurant itself is ground level access.

**Parking:** Parking spaces located on the main street in front of Cantina. A drop off point nearby would be the Hall Street Plaza parking lot next to Bia Boro.

## Ian Skorscha

**Time:** 6:00 p.m - 9:00 p.m

**Location:** Black Cauldron (620 Herridge Lane)

**Site Access:** There are three steps up to the entrance at the Black Cauldron and the patio is through the main restaurant area.

**Parking:** The nearest accessible parking spaces are located down the alleyway in front of Pitchfork.



# Murals & Muralists (2025)

## Leaning Wilds

Priscilla Yu

**Location:** 777 Baker Street, in front of Kootenay Co-Op

**Image Description:** Bright, angular shapes burst across the wall in this vibrant mural, where stylized Kootenay flowers—glacier lily, wild rose, and western trillium—emerge from a geometric landscape. Bold segments of yellow, pink, teal, and orange create a fragmented, dreamlike view of nature. The contrast between sharp abstraction and organic forms evokes a reimagining of regional flora through a contemporary, digital lens

**Access info:** There is one dedicated accessible parking space in the Kootenay Co-op parking lot, and one across the lot outside Nelson Remedy's Rx on Baker Street. A wide paved entrance and alleyway in front of the Co-op provide a great view. Level access.



## ~ transición

Angie Jerez

**Location:** 461

Josephine St in the alley beside Nature's Health

**Image Description:**

This vibrant mural features a bold, symmetrical design that spreads out from a central point. Using shades of turquoise, terracotta, black, and white, the artwork blends floral shapes with swirling lines. At the center, a butterfly-like form appears, which also hints at a woman's face in an abstract way. The flowing shapes and bright colours give the mural a sense of movement and energy, combining nature with imagination.

**Access info:** There is one dedicated accessible parking space on Josephine St, beside RHC Realty. A level sidewalk provides access to a paved alleyway for viewing. Level access.



# 2025 Murals & Muralists

## Under Mountain Skies

**Axel Morrison**

**Location:** Pump house at Lakeside Park, across the path from the outdoor gym



**Image Description:** The artist incorporated contrasting colours of blue and orange into this piece which really makes it pop. Each side of the wall features interesting linework and imagery such as an eagle on one side and a dog on the other.

**Access info:** There is one dedicated accessible parking space near the soccer field bathrooms. A paved path provides level viewing access to three sides of the pump house and an unpaved gravel path accesses the back side. Level access.

# the story of gunpowder gertie

**Gijs Vanhee**

**Location:** 420 Vernon Street, on the Stanley Street facing side.

**Image Description:**

A large tree rises from a turquoise bay, stretching to the top of the wall. Nestled

in its branches is a blue and white ship, where a bird-headed figure reads near the bow. A red and white lifering hangs from the stern, and a yellow propeller peeks out the side, blending whimsy and surreal calm.

**Access info:** Dedicated accessible parking inside parkade on the ground level and paved sidewalk provides viewing along Vernon Street. Alternatively there is one dedicated accessible parking space in front of Ted Allen's Jewellery on Baker St, with a sloped sidewalk down to a paved level alley. Level access.



Photos by Wyatt Miller-Unser

# Saturday



## Block Party

On August 9th, Saturday evening, there will be performances and festivities at our stage in Raitown from 4:35 p.m to 10:30 PM.

### **Saturday Hosts:**

**mochilero**

**Sleazy Dan and Shiraz Deville**

**the della kit**

Photo by Louis Bockner



# Schedule with ASL

## Performer

## ASL

**Ayush Chaudhary**

4:35 p.m- 5:00 p.m

**Zaynab Mohammed**

5:00 p.m-5:15 p.m

**Oh Pray Tell**

5:20 p.m- 5:50 p.m

**RevoluSon**

6:00 p.m-6:30 p.m

**DJ Blee**

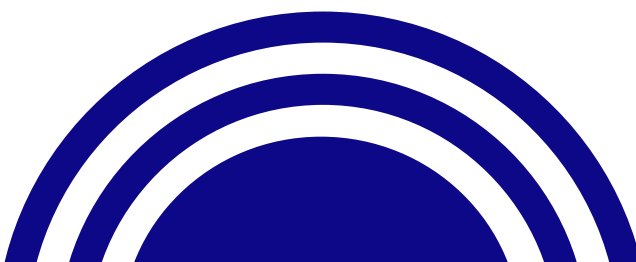
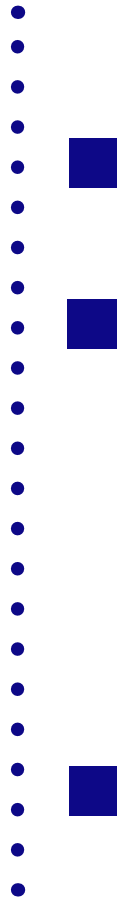
6:35p.m -7:05 p.m

**the della kit**

7:05 p.m -7:20 p.m

7:50 p.m- 8:05 p.m

9:40 p.m-9:55 p.m



# Schedule with ASL

## Performer

## ASL

**Kiva MH**

7:20-7:50 p.m



**Wild Rose Dance**

8:15 p.m-8:25 p.m

**Shawnee Kish**

8:30 p.m-9:00p.m



**Candela Latina (Latin Fire)**

9:00 p.m-9:40 p.m

**MAMALIA**

9:10 p.m-9:40 p.m



**Desi Beat Section**

9:55 p.m- 10:30 p.m

Photo by Electrify Photography



# Site Access

## **Saturday Site Access**

**4:30 - 10:30 PM**

**91 Baker Street**

Free to attend.

No ticket reservation required.

Service dogs welcome.

### **Accessible parking**

The Saturday events block off the Visitor Centre parking lot in Railtown. Accessible and level access parking is available in the East half of the parking lot and on Baker Street.

### **Level access**

The area of the festival has level access for visitors. There is a raised stage for improved visibility.

**Note:** some dance performances take place on street level below the raised stage.

### **Staff and Volunteers**

Staff and volunteers will be available in clearly visible clothing to assist with access requests.

### **Priority Seating Area**

A covered area with seating will be available. There will also be water sprinklers to help keep festival goers cool.

# Site Access

## **Kids Activities**

There will be an area for kids art-related activities and face painting.

**Note:** Parents/guardians must supervise children; no on-site childcare is provided.

## **Washrooms**

Accessible washrooms are open late at the Visitor Centre, with a portable toilet also available on site.

## **Visibility**

Sunset on August 9th is at 8:30 PM. Some areas, like the NDAC booth, will be lit, but overall lighting will be dim.

## **Sound**

Most outdoor festival music plays around 100 decibels. Free earplugs are available at the NDAC tent.

## **Weather, Environment, and Smoke**

Saturday night events usually continue in rain, but may move indoors for severe weather or poor air quality. Check with NIMF staff or NIMF social media for updates.

# Workshops

Saturday

august 9th

## **Our Bodies Speak But Can We Hear**

**Mercedes Baines**

10:30 a.m-11:30 a.m

## **Power Pop Choir**

**Robyn Lamb**

11:45p.m-12:45p.m

## **Urban Latin Flow**

**Valentina Mayorga**

1:00 p.m-2:00 p.m

## **Beats and BPMS ( Beats per minute )**

**Desi Beat Section**

**(Delhi2dublin)**

2:30 p.m-4:00 p.m

**ASL is available for all  
workshop.**



# Workshops

Sunday

august 10th

## Music is Medicine and Songwriting

**Shawnee Kish**

10:30 p.m - 12:30 p.m

## Son Cubano-The Mesmerizing Sound of Late 19th Century Cuba and Beyond

**RevoluSon**

12:30 p.m - 2:00 p.m

## Creativity and Pursuing a Professional Career in Music: Q and A Workshop

**MAMALIA**

2:30 p.m - 3:30 p.m

**ASL is available for all workshops.**

### **Kootenay Art Therapy Institute ( KATI ) (191 Baker St)**

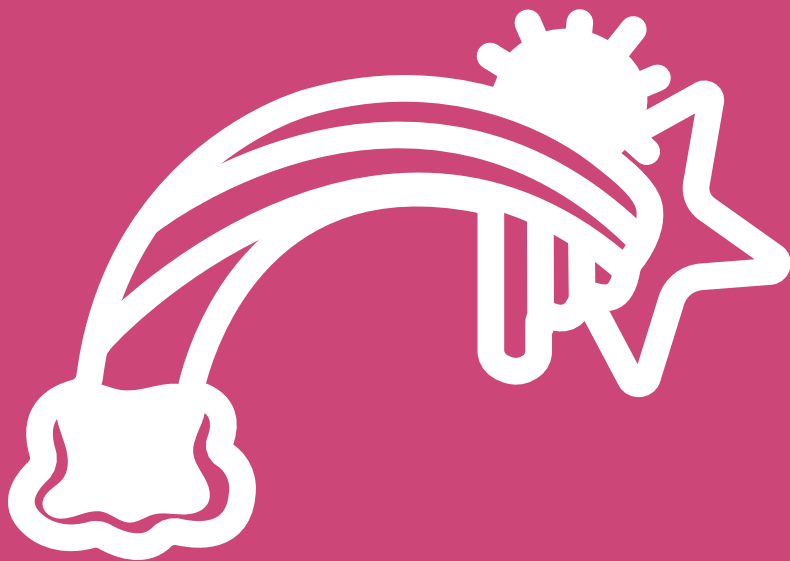
**Accessibility stair lift:** KATI includes a stair lift to ensure access to the second floor for individuals with limited mobility.

**Wheelchair-accessible parking lot:** there's designated accessible parking available. Baker street parking is available on the main strip.

**Gender-neutral washroom:** The institute also offers a gender-neutral washroom on site.

**Staff and Volunteers:** Staff and volunteers will be available in clearly visible clothing to assist with access requests.

nelson international  
**MURAL  
FESTIVAL**



NIMF staff and volunteers will be easily identifiable by their pink t-shirts featuring this image on the front.

*City of*  
**NELSON**

Funded by the  
Government  
of Canada

Financé par le  
gouvernement  
du Canada

**Canada** 



BRITISH COLUMBIA  
ARTS COUNCIL



BRITISH  
COLUMBIA

**NELSON**  
AND  
**KOOTENAY LAKE**  
*Tourism*

Columbia  
Basin **trust**

**Kootenay**  
*co-op*